



SD-038

CO₂ Transmitter for Indoor Type / Duct Type



SENSOR DATA

SD-038

CO₂ Transmitter for Indoor / Duct

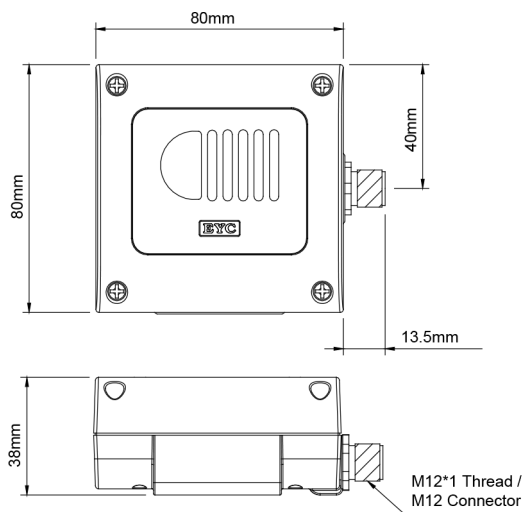
With the high CO₂ concentration indoors, people will feel tired easily. So by controlling the CO₂ value relevantly, people will feel more energetic. CO₂ transmitter now is substantially used inside the buildings and some even being applied in agriculture to help foster the growth the plants in a more healthier and quicker way.



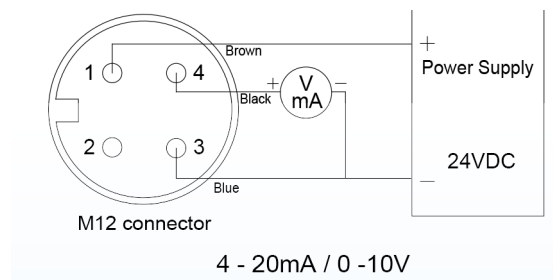
APPLICATIONS

- HVAC control
- Instrument testing equipment
- Environmental control and monitoring system
- Ventilation system control for parking lot and building
- Green houses, fruit and vegetable storage

Dimensions



Connections



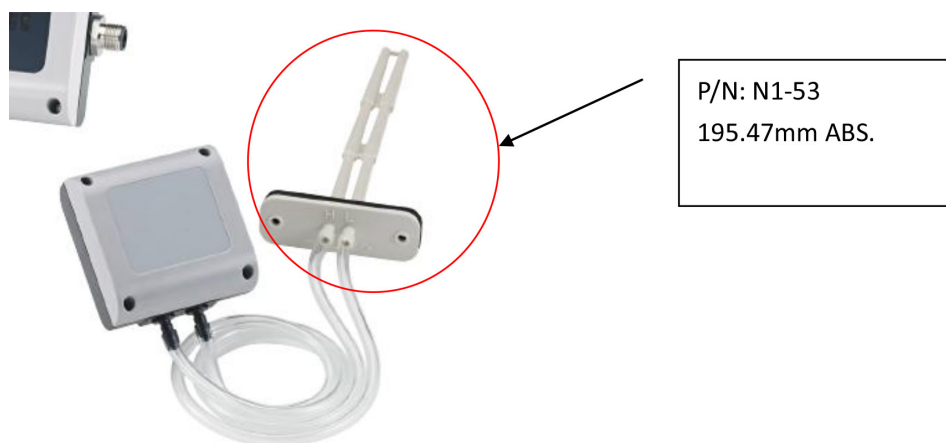
Order codes

SD-GAS038 - **03** **1** **1** **1** **2** **M**

Installation	Input	Output	Power supply	CO ₂ range	Option
03: indoor 04: duct-mounting	1: CO ₂	1: 4-20mA 6: 0-10V	1: 24 VDC +/- 10%	2: 2000 PPM 5: 5000 PPM 8: 10000 PPM	M: M12*1 thread / M12 connector

Technical specifications

Sensor type	NDIR sensor
Measuring range	2000 / 5000 / 10000PPM
Working range	2000 / 5000 / 10000PPM
Output	0~10V / 4~20mA (programmable) ; 3-wire
Linear accuracy	±30 ppm ±3 % of measured value
Sensitivity	±20 ppm ±1 % of measured value
Load resistance	≤ 500Ω for 4~20mA ≥ 10 KΩ for 0~10V
Output calibration (ZERO & SPAN) adjustment range	10% of zero-point and full-range
Response time	GS03: 20sec. ; GS04: 15min.diffusion time
Media measure d	non-aggressive gas (HVAC system)
Media temperature	0~50°C
Working temperature	0~50°C
Working humidity	0~95% (non-cond.)
Storage temperature	30~70°C
Tolerance of zero-point	±30 ppm / 10 K
Tolerance of measuring range	±30 ppm / 10 K
Power supply	DC 24V ±10%
Current consumption	70 mA
Starting current	0.6A
Electrical connection	M12 connector
Installation	indoor
Way to fi x	screw on the base
Protection degree	housing IP: 54
Electrical protection	<input checked="" type="checkbox"/> over-voltage <input checked="" type="checkbox"/> polarity
Certifi cation	CE
Housing	PC fi re-proof class (PC-110)
Weight	140g
Option	N1-52 / N1-53 / N1-54 / N1-55 /N1-56 / N1-57 / Draft tube / PVC tube * 2M



- P/N: N1-51: 80.17mm, ABS
P/N: N1-52: 137.32mm, ABS
P/N: N1-53: 195.47mm ,ABS
P/N: N1-54: 252.62mm, ABS
P/N: N1-55: 309.77mm, ABS
P/N: N1-56: 433.0mm, ABS
P/N: N1-57: 510mm, ABS
P/N: N1-58: 580mm, ABS
P/N: N1-59: 653mm, ABS

Please select one size.

- Transparent tube 3 meter is okay.