

AIR VELOCITY TRANSMITTER (DUCT/REMOTE)

SDFT

APPLICATIONS

Features

- Measuring range : 2 m/s ; 10 m/s ; 20 m/s.
- Output: 4~20 mA / 0~10 VDC.
- High stability and repeatability.
- Smaller tolerance in setting angle.

Applications

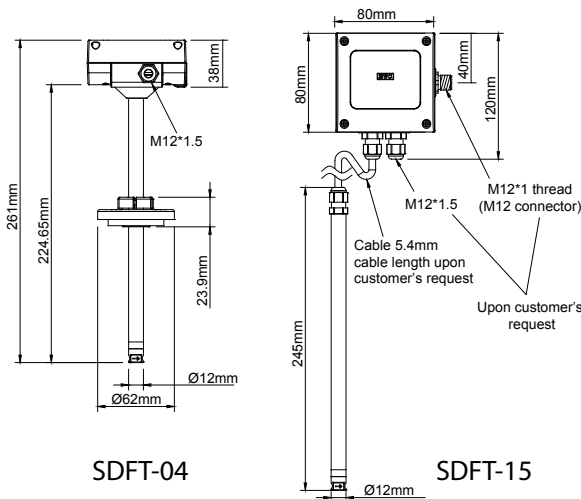
- HVAC air process control.
- Clean rooms and environmental control.
- Laminar control.



SDFT **04** - **10** **1** **1** - **N**

Installation	Range	Output	Power Supply	Option
04 : duct-mounting 15 : remote type	02: 2 m/s 10: 10 m/s 20: 20 m/s	1 : 4~20mA 6 : 0-10V	1 : 24 VDC±15%	N : none M : M12*1 thread (M12 connector) 5 : 5-meter cable (FTS15)

DIMENSION



TECHNICAL SHEET

INPUT

Measuring range.....2 m/s ; 10 m/s ; 20 m/s

OUTPUT

Output.....4~20 mA / 0~10 VDC ; 3-wire
 Linear accuracy (at 25°C ; 45% ; 1013 mbar)
 ± 3 % of F.S. +0.2m/s
 Working range 6% ~ 100% of F.S.
 Load resistance (current output)..... ≤ 500Ω
 Load resistance (voltage output)..... ≥ 10KΩ
 Output calibration (ZERO & SPAN) adjustment range
 10% for zero-point and full-range (for mA output)
 Response time..... reach 90% of ultimate value within 1 sec.
 Angular dependence < 3% of measuring value
(when the angle <10°)

ENVIRONMENT

Media measured.....air
 Media temperature.....0~50°C
 Working temperature.....0~50°C
 Working humidity.....non-cond.
 Storage temperature.....-20~60°C

ELECTRICAL REGULATION

Power supply 24 VDC ±10%
 Current consumption 150 mA
 Overvoltage protection <33VDC
 Electrical connection..... 3P connector / M12 connector

INSTALLATION

Installation duct-mounting / remote type
 Way to fix flange
 Protection degree IP 65
 Electrical protection ■ over-voltage ■ polarity
 Certification..... CE
 Housing PC fire-proof
 Probe PC fire-proof
 Probe's head stainless Steel
 Cable PVC (FTS15)
 Weight SDFT-04: 147g / SDFT-15: 200g

CONNECTION DIAGRAM

